

Key Vocabulary

endangered	A species of animal or plant that is at risk of becoming extinct (no longer existing).
game reserve	A protected area of land where humans are allowed to live and carry out some different activities.
habitat	The natural home of a plant or animal.
migration	When animals move from one area to another, often to find food, water or shelter.
national park	A protected area of land where only tourism and research is allowed. No humans live there.
rural	Areas away from towns or cities, also known as the countryside.
savannah	Tropical grasslands with shrubs and trees but not much rainfall.
tourists	People who travel for fun.

Where is Kenya?

- Located in east Africa.
- Population of around 44 million.
- The capital city is Nairobi.
- Mombasa, situated on the coast, is one of Kenya's largest cities.
- The Tana river is the longest river in Kenya.
- Mount Kenya is the highest mountain (5200m).
- Kenya's coastline is on the Indian Ocean.
- Swahili and English are the official languages.



Weather and Climate

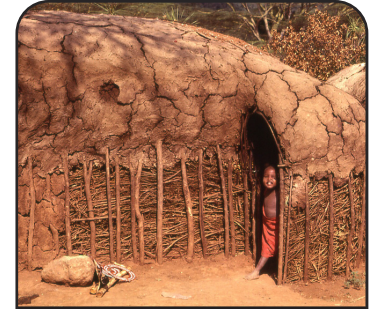
Kenya lies on the equator.	Climate is hot, sunny and dry for most of the year.
Hot, dry deserts in the north.	Hot and humid in the west.
The highlands are cool.	Mount Kenya is high enough to be covered in snow all year round.

National Parks and Reserves

- There are over 50 **national parks** and **game reserves**.
- They include different types of wildlife and **habitats**, including wetlands, grasslands, forest and **savannah**.
- The Maasai Mara National Reserve is one of the most popular reserves for **tourists** to visit.
- Millions of **tourists** visit the famous reserve to go on safari, explore the landscape and to see the amazing wildlife, including the 'Big Five'.
- Each year visitors come to watch the huge **migration** of wildebeest.
- Some animals in Kenya are **endangered** and are protected within the parks and reserves.

The Maasai Tribe

- Maasai people traditionally live in mud huts made from mud, sticks, grass and cow dung.
- Many Maasai are farmers and own large herds of cows, goats and sheep.
- The Maasai people love music and dance. They often sing and the men perform a special jumping dance.



Traditional mud hut.

School Life in Kenya

- Most children in Kenya go to school, but not all of them.
- Some children, especially in **rural** areas, are too busy helping their families by working on the farm, cooking or fetching water.
- At school, some children may be different ages but in the same year group.



Maasai Tribe.

The Big Five - the largest and most dangerous African animals



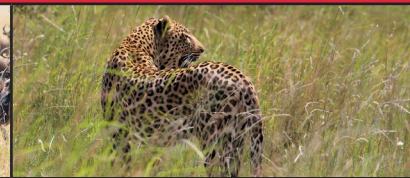
African lion



African elephant



Cape buffalo



African leopard



White/black rhinoceros